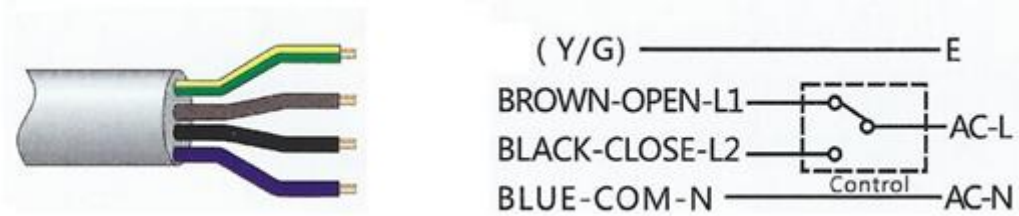


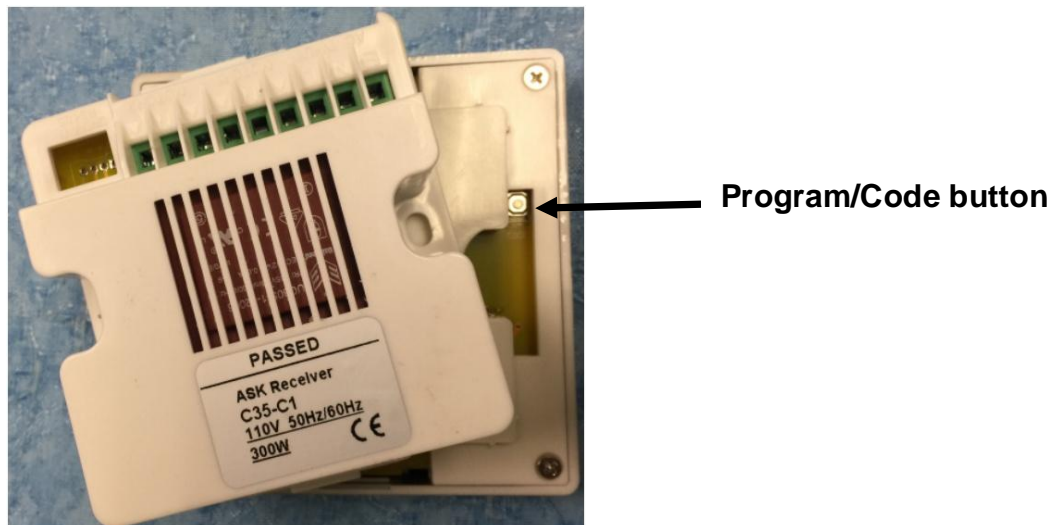
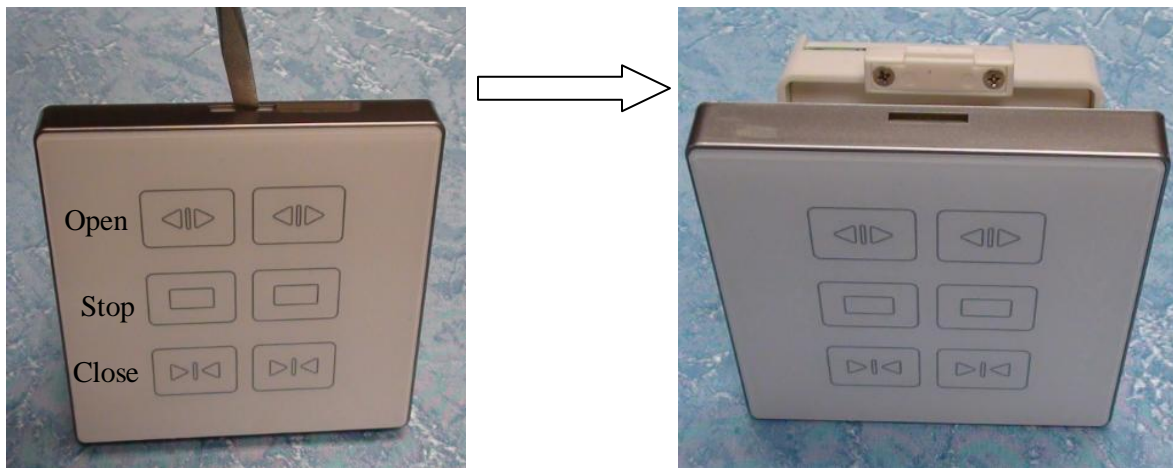
S168-4Y Motor Connecting to C35-2 Wall Switch

Wiring Diagram



Program the Motor with Wall Switch C35-2 (2 channels)

Open the back cover of Wall Switch C35-2 by pushing the spring lock as shown below. The Program/Code button will be uncovered, see picture next page.



- Fig 1 below shows two motors have been wired together to the C35-2 Wall Switch.
- The two motors are operated independently.

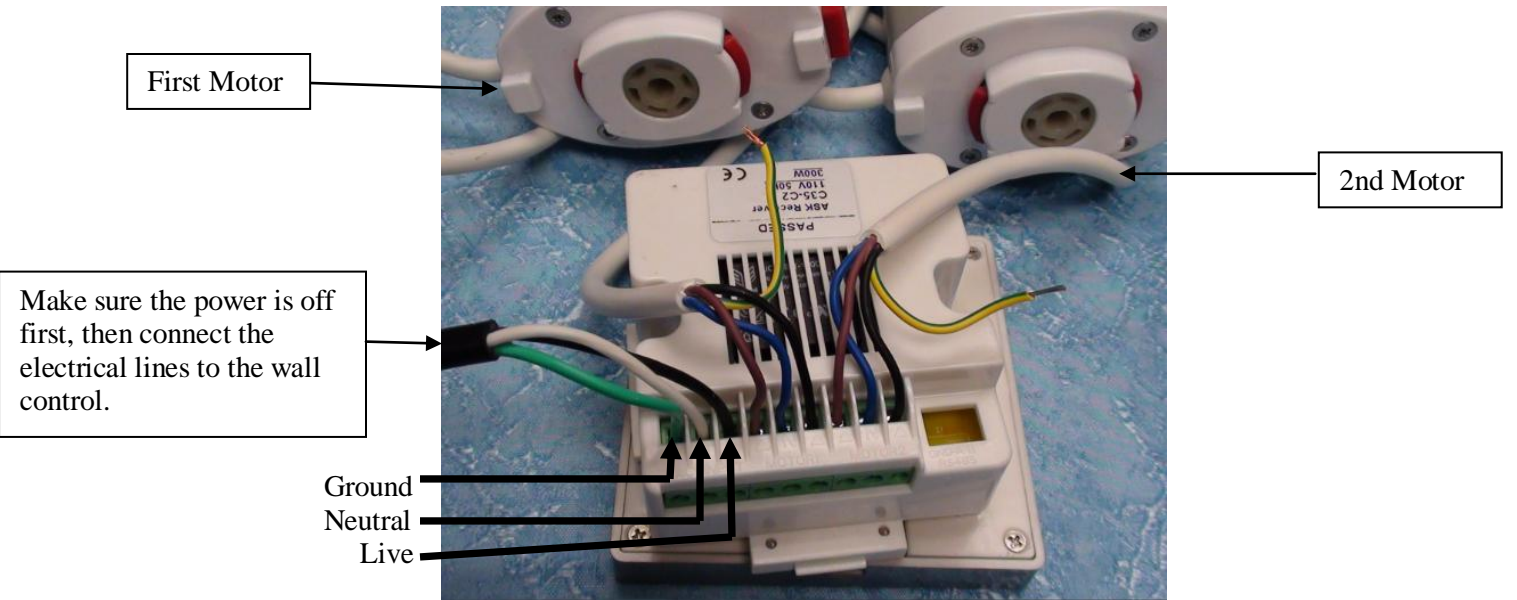


Fig 1 - 2 motors/wall switch wiring diagram

1. On the **Wall Switch**, press & hold the “Program/Code” button until the “Stop” button on the front panel LED flashes.
2. Select which set you want to use, press this flashing “Stop” button once.
3. Select the channel # on the Remote Control if there are selections
4. Press the “Open” button on the **Remote Control** for a few seconds till the Carrier starts moving. Let it move to the end of the track.(Do NOT stop the Carrier midway). Then Press the “Close” button on the **Remote Control** to let the Carrier moves to the other end of the Track. Repeat the opening/closing one more time.
4. The Motor itself has detected & decided the carriers’ starting & stopping points. Now it is ready for operations: Open, Close or Stop by the Remote Control and Wall Control.
5. Repeat the above steps 1 to 4 for the 2nd Motor with the other set of buttons on the Wall Control.

For further inquiry please contact: ElectricDraperyRod@gmail.com